

 **finarch**



[www.finarch.com](http://www.finarch.com)

Verlorenbroodstraat 122  
B-9820 Merelbeke  
Belgium

tel : +32 9 272 64 10

fax : +32 9 272 64 59

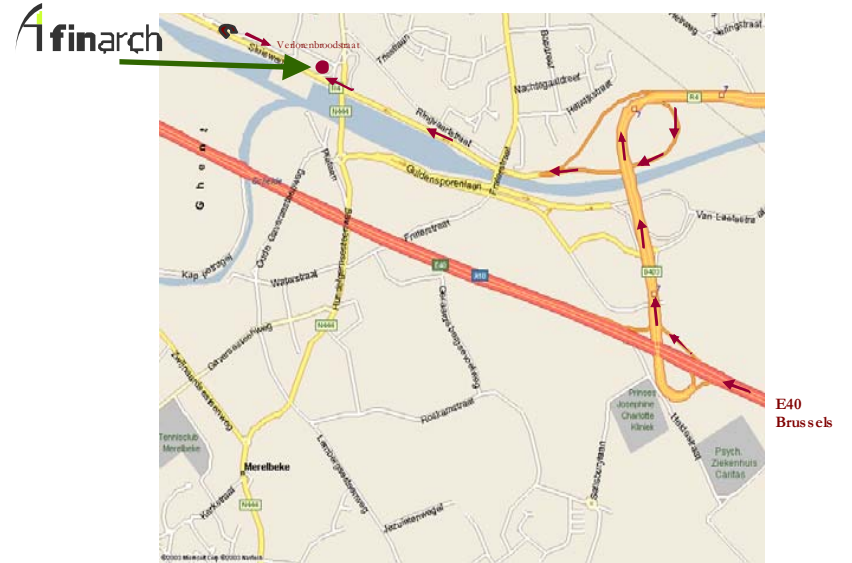
Coming from Brussels

Leave the E40/A10 at junction 16 - Merelbeke and straight ahead onto the B403 direction Antwerpen, Ring, E17, R4. Leave the B403 at junction 7 - Merelbeke-Ring and turn right onto the R4 direction Eeklo-Gent-Merelbeke, Haven.

Continue straight onto the R4 for about 2km.

At the first exit (2nd bridge), keep right (but do not turn right) and continue into the Sluisweg under the bridge.

Our offices are located in the first building that you see at your right just behind the bridge; to get there continue for about 250m and make a U-turn into the Verlorenbroodstraat.



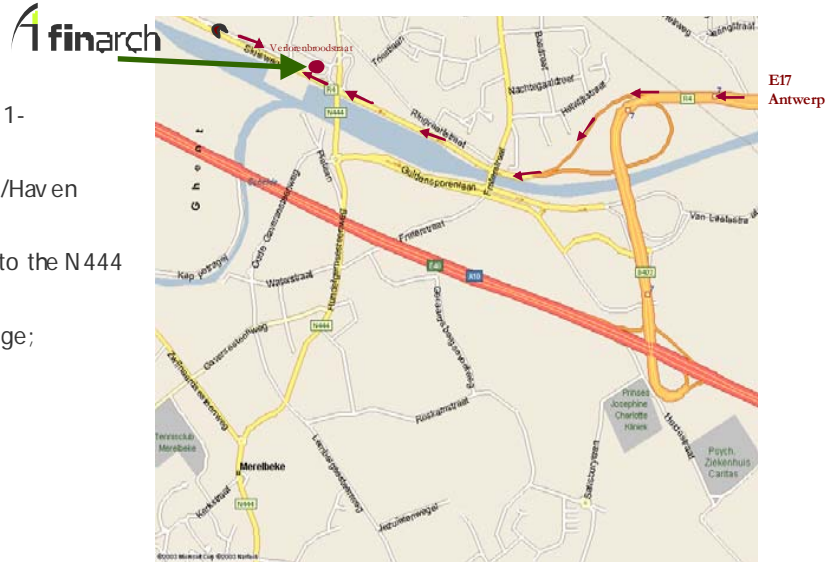
Coming from Antwerp

Leave the E17/A14 at the junction Heusden. Keep right towards the R4 direction Haven 1-6990/Zelzate/Gent-Zeehaven/Melle and continue left towards Melle/Merelbeke.

Continue straight onto the R4 and keep right at junction 7, following the direction U.Z.G./Haven 7000-9990/Eklo/Merelbeke.

At the first exit (2nd bridge), keep right at the fork in the ramp (but do not turn right onto the N444 - Merelbeke) and continue straight ahead into the Sluisweg under the bridge.

Our offices are located in the first building that you see at your right just behind the bridge; to get there continue for about 250m and make a U-turn into the Verlorenbroodstraat.



**Coming from Kortrijk**

Leave the E17/A14 at exit Gent-Centrum/9 U.Z.Gent in direction 9, U.Z.G.

Turn left onto the Corneel Heymanslaan and continue along on the Ottergemsesteenweg-Zuid for about 800m.

Turn left into the Sluisweg, direction Merelbeke. At the ramp after 1.5km keep left again into the Verlorenbroodstraat; FinArch is located in the second building at your right hand side (closest to the bridge).

**E17  
Kortrijk**

